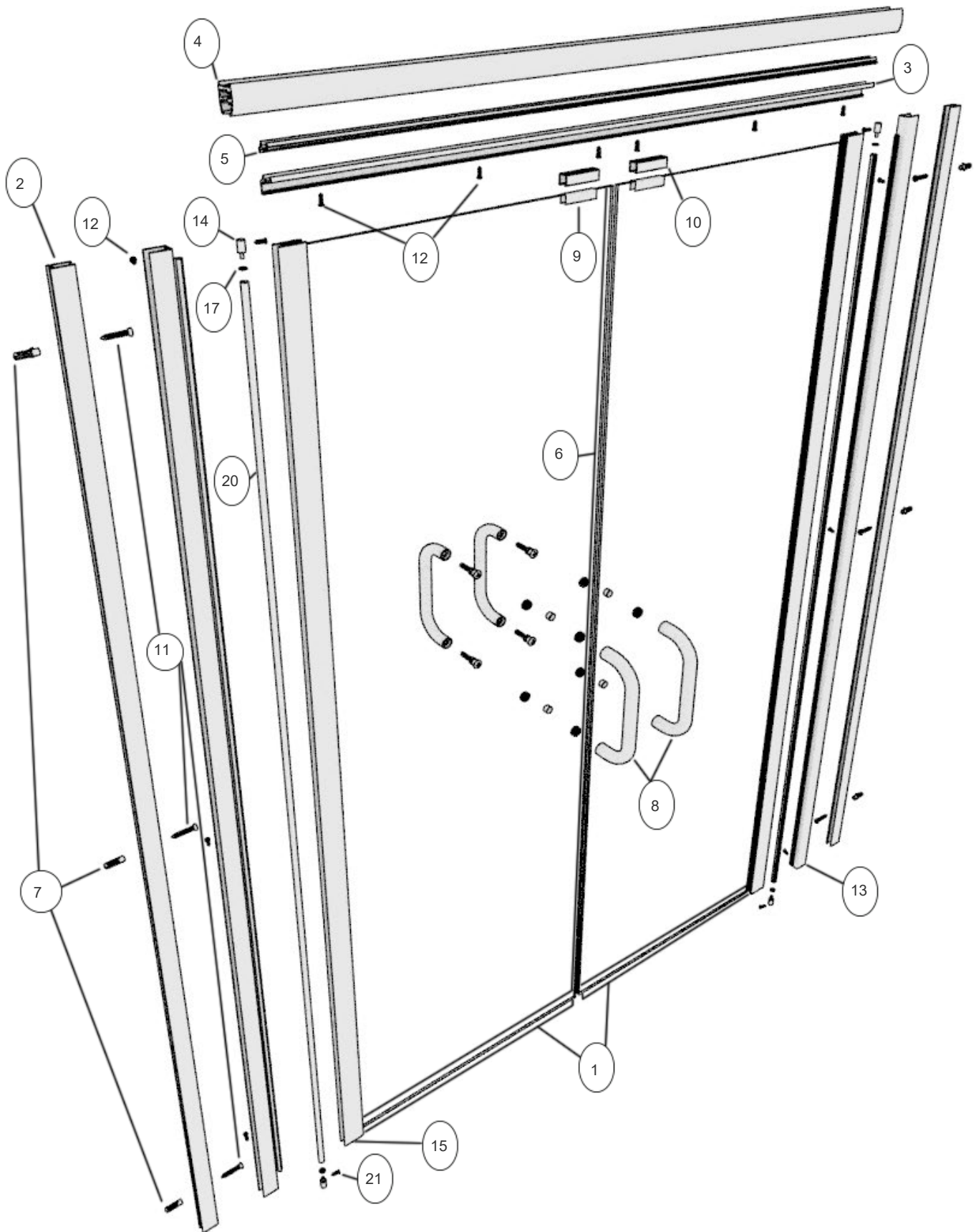


ARIZONA | SHOWER DOOR

Installation Instructions Dual RP Doors



ARIZONA SHOWER DOOR

Tools you will need for this install

- ✓ Exploded View drawing of shower door
- ✓ 3/16" Masonry drill bit (use 9/64" drill bit for fiberglass)
- ✓ 1/8" drill bit
- ✓ Drill
- ✓ 4' Level
- ✓ Saw (Electric Chop saw or Hacksaw)
- ✓ Side cutting pliers
- ✓ #2 Phillips drill bit
- ✓ #2 Phillips screwdriver
- ✓ Tape Measure
- ✓ Pencil or Pen
- ✓ Caulking Gun
- ✓ 1-Tube of 100% **Clear** Silicone (no latex!)
- ✓ Vacuum Cleaner or Brush for clean up
- ✓ Glass Cleaner and Paper Towels
- ✓ Rubber Mallet
- ✓ File

When ordering replacement parts, please provide the following information:

1. Part Number
2. Part Name
3. Model Number
4. Specify design (if any)

#	Description	Qty	Part #
Extrusion Bundle			
1	Bottom Rail Poly	2	ZVP-14WS
2	Wall Channel Jambs	2	ZD-1006
3	Mag Latch Jamb	1	ZD-8004
4	Header	1	ZD-2101
5	Snap in filler	1	ZD-1102
6	Poly Strike Jamb	1	P140HJ
Install Bag			
7	Wall Anchors	6	ZV-935
8	Back to Back Pull	2	ASD 8X8 T
9	Handle Gasket 1/4"	2	ZV-916
10	Mag-U-Channel	2	MAG-4012
11	#8X1 1/2" PH SMS	6	
12	#6x3/8" PH SMS	12	
Attached to Glass			
13	Hinge Jamb	2	ZD-2505A
14	Hinge Pins	4	ZV-910
15	Hinge Rail	2	ZD-2503A
16	Strike Gasket	2	ZV-907
17	Washer	4	FW6516
18	Magnet	2	MAG4013
19	Hinge Rail - 1/4" Vinyl	1	ZV-925 1/4
20	Hinge Rail Sleeve Door	2	ZV-995
21	#6/32X3/8" FH MS	2	

Installation Instructions for Model Dual RP Door

Please read through **all** of the instructions to get an over-view **before** you install the door.

1)

(a) Find the centerline of where the unit will be installed. (This will usually be the center of the threshold of the shower pan.)

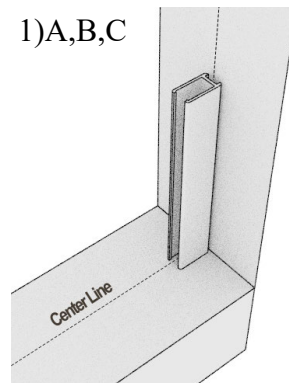
(b) Place a centerline mark at the end of each curb where it meets the wall. (This will also represent the center of the ZD1006 wall jamb.)

(c) Use a level to position the jamb plumb, then mark the installation holes with a pen or pencil. Repeat this procedure for the other wall jamb. Now drill the six holes with a 3/16" masonry bit, (9/64" for fiberglass, & without anchors.)

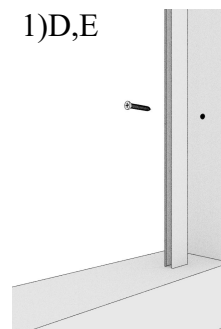
(d) Insert the six ZV935 screw anchors in the holes.

(e) Fasten the ZD1006 wall jambs in place using the #8X1-1/4 Phillips Pan Head screws provided.

1)A,B,C



1)D,E



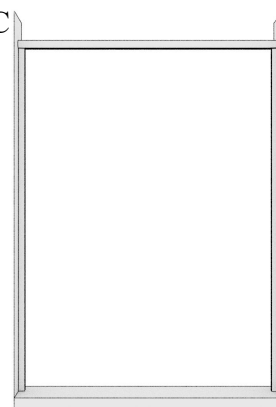
2)

(a) Measure wall to wall at the top of your wall jambs.

(b) Cut the ZSS2101 header to this dimension.

(c) Install the ZSS2101 header on top of the wall jambs.

2)C



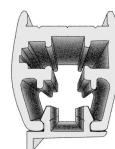
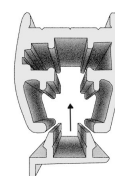
3)

(a) Measure between wall jambs beneath the header.

(b) Cut the ZSS1102 snap-in filler to this dimension.

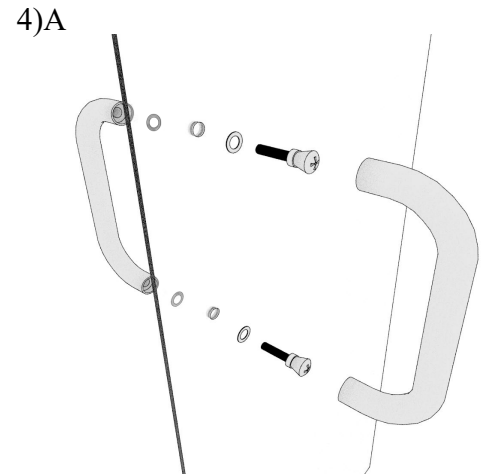
(c) Snap the ZSS1102 into the bottom of the ZSS2101 header, (*4)

3)C



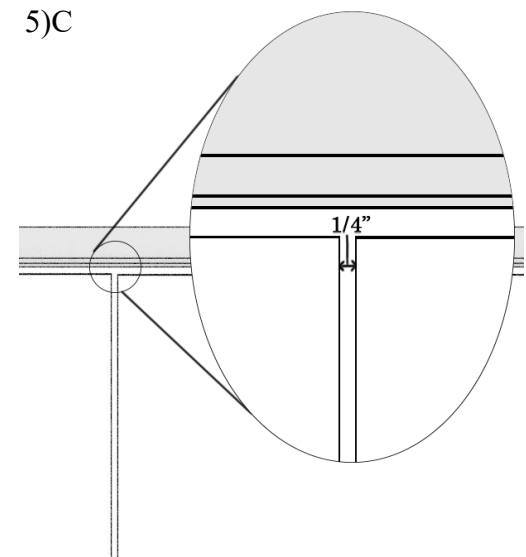
4)

- (a) Install handle on first door.
- (b) Lift the door and slide the hinge jamb (ZD2505A) over the wall jamb (ZD1006.) Leave $\frac{1}{4}$ " gap between the wall and the hinge jamb. Make sure the door is level and That it swings outward.
- (c) Drill $\frac{1}{8}$ " holes through the hinge jamb into the wall jamb.
- (d) Secure hinge jamb to wall jamb using three #6X3/8" Pan Head screws.
- (e) Install P140HJ on edge of door glass.



5)

- (a) Install handle on remaining door.
- (b) Using the same method as step 4, install the remaining door by sliding the hinge jamb over the wall jamb.
- (c) Adjust the door so that there is a gap of approximately $\frac{1}{4}$ " between the two doors when in the closed position.
- (d) Drill $\frac{1}{8}$ " holes through the hinge rail into the wall jamb.
- (e) Secure hinge jamb to wall jamb using three #6X3/8" Pan Head screws.



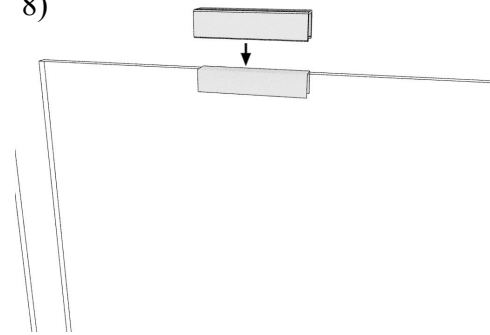
6)

Secure the header to the wall jambs by drilling $\frac{1}{8}$ " hole on the inside through the header into the wall jamb, then fastening with the #6X3/8" Pan Head screws.

7)

- (a) With the door in the open position measure the distance between the 2505A hinge jambs and divide that dimension by 2.
- (b) Measure that distance from the center of the ZD8004 and mark that location for your first cut.
- (c) Cut at that location.
- (d) From the cut side, measure the full dimension of distance between the ZD2505A hinge jambs and mark the location for the second cut.
- (e) Cut at that location.
- (f) With the doors in the open position, set the ZD8004 (ripped) in place with the magnets facing the exterior of the enclosure.
- (g) Using the 1/8" drill bit, drill through pre-drilled holes in ZD8004 into the ZSS1102.
- (h) Fasten using F6X3/4 screws.

8)



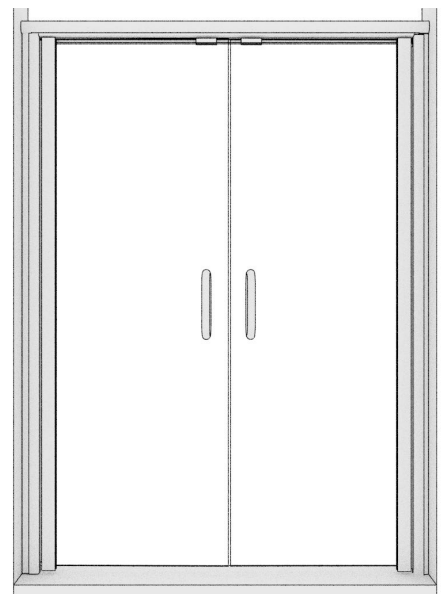
8)

- Attach the MAG4012 on the top of each door by placing the ZV916 gasket over the edge of the glass then using a rubber mallet to tap the MAG4012 over the gasket, being sure to align each one with the magnets installed in step 7(*10).

9)

- (a) Run a bead of silicone on the inside and outside where the wall jambs meet the shower walls.
- (b) Allow silicone to cure for 24 hours before cleaning glass or operating shower.

9)



ARIZONA SHOWER DOOR

LIMITED LIFETIME WARRANTY

EFFECTIVE MARCH 25, 2016

ARIZONA SHOWER DOOR, (ASD) OFFERS THE FOLLOWING LIMITED WARRANTY ON EACH OF ITS SHOWER ENCLOSURE PRODUCTS (THE "PRODUCT") AND THE COMPONENTS THEREOF. THIS WARRANTY EXTENDS ONLY TO THE ORIGINAL OWNER OR END-USER FOR PERSONAL HOUSEHOLD USE. FOR HEAVY GLASS SWING UNITS, CANYON/SEDONA UNITS, WARDROBE UNITS, COMMERCIAL USES, ADDITIONAL LIMITATIONS APPLY.

ARIZONA SHOWER DOOR WARRANTS THE ASD MANUFACTURED COMPONENTS AND GLASS OF THE PRODUCT TO BE FREE FROM DEFECTS IN WORKMANSHIP AND MATERIALS UNDER NORMAL USE AND SERVICE FOR A PERIOD COMMENCING FROM THE INITIAL DATE OF PURCHASE BY THE OWNER OR END-USER, CONTRACTOR, OR BUILDER, FROM ASD OR AN AUTHORIZED ASD DEALER, THROUGH THE LIFETIME OF THE ORIGINAL OWNER OR END-USER.

ARIZONA SHOWER DOOR WARRANTS THE SEAL STRIP, POLYCARBONATE, AND VINYL COMPONENTS OF THE PRODUCT TO BE FREE FROM DEFECTS IN WORKMANSHIP AND MATERIALS UNDER NORMAL USE AND SERVICE FOR A PERIOD OF ONE (1) YEAR FROM THE INITIAL DATE OF PURCHASE BY THE OWNER OR END-USER, CONTRACTOR, OR BUILDER, FROM ASD OR AN AUTHORIZED ASD DEALER.

THE ARIZONA SHOWER DOOR FACTORY APPLIED GLASS PROTECTOR (PURCHASED SEPARATELY) IS NOT COVERED UNDER THE ARIZONA SHOWER DOOR LIFETIME WARRANTY.

SUBJECT TO THE WARRANTY SERVICE PROVISION BELOW, ANY PRODUCT REPORTED TO THE AUTHORIZED DEALER OR TO ASD AS BEING DEFECTIVE WITHIN THE WARRANTY PERIOD WILL BE REPAIRED OR REPLACED (WITH A PRODUCT OF EQUAL VALUE) AT THE OPTION OF ASD. THIS WARRANTY EXTENDS TO THE ORIGINAL OWNER OR END-USER AND IS NOT TRANSFERABLE TO A SUBSEQUENT OWNER. THIS WARRANTY DOES NOT EXTEND TO ANY LABOR CHARGES INCURRED IN THE REMOVAL, RE-INSTALLATION OR REPLACEMENT OF ANY DEFECTIVE PRODUCTS OR PARTS THEREOF. THIS WARRANTY COVERS PARTS ONLY; LABOR, FREIGHT AND OTHER ANCILLARY COST ARE NOT INCLUDED. PROOF OF PURCHASE REQUIRED TO VALIDATE WARRANTY CLAIM.

NEITHER THE DISTRIBUTOR, AUTHORIZED ASD DEALER, NOR ANY OTHER PERSON HAS BEEN AUTHORIZED TO MAKE ANY AFFIRMATION, REPRESENTATION, OR WARRANTY OTHER THAN THOSE CONTAINED IN THIS WARRANTY. ANY AFFIRMATION, REPRESENTATION, OR WARRANTY OTHER THAN THOSE CONTAINED IN THIS WARRANTY SHALL NOT BE ENFORCEABLE AGAINST ASD OR ANY OTHER PERSON.

ARIZONA SHOWER DOOR RESERVES THE RIGHT TO MODIFY THIS WARRANTY AT ANY TIME, IT BEING UNDERSTOOD THAT SUCH MODIFICATIONS WILL NOT ALTER THE WARRANTY CONDITIONS APPLICABLE AT THE TIME OF SALE OF THE PRODUCTS IN QUESTION.

LIMITATIONS

THIS WARRANTY SHALL NOT APPLY TO INSTANCES OF INCORRECT OPERATING PROCEDURES, BREAKAGES, OR DAMAGES CAUSED BY FAULT THROUGH IMPROPER INSTALLATION, CARELESSNESS, ABUSE, MISUSE, MISAPPLICATION, IMPROPER MAINTENANCE, OR ALTERATION OF THE PRODUCT, AS WELL AS CHEMICAL OR NATURAL CORROSION, ACCIDENT, FIRE, FLOOD, AN ACT OF GOD, OR ANY OTHER CASUALTY. AVOID ABRASIVE CLEANERS, STEEL WOOLS, AND HARSH CHEMICALS AS THESE WILL SCRATCH, DAMAGE, AND/OR DULL THE PRODUCT AND/OR FINISH AND VOID THIS WARRANTY.

THIS WARRANTY DOES NOT APPLY TO PRODUCTS THAT HAVE NOT BEEN INSTALLED OR OPERATED IN ACCORDANCE WITH INSTRUCTIONS SUPPLIED BY ARIZONA SHOWER DOOR AND ALL APPLICABLE RULES, REGULATIONS, AND LEGISLATION PERTAINING TO SUCH INSTALLATIONS.

ARIZONA SHOWER DOOR IS NOT LIABLE FOR PERSONAL INJURIES OR DEATHS TO ANY PERSONS OR FOR ANY DIRECT, SPECIAL, INCIDENTAL, OR CONSEQUENTIAL DAMAGE, LOSS OF TIME, LOSS OF PROFITS, INCONVENIENCE, INCIDENTAL EXPENSES, LABOR OR MATERIAL CHARGES, OR ANY OTHER COSTS RESULTING FROM THE USE OF THE PRODUCT OR EQUIPMENT OR PERTAINING TO THE APPLICATION OF THE PRESENT WARRANTY, OR RESULTING FROM THE REMOVAL OR REPLACEMENT OF ANY PRODUCT OR ELEMENT OR PART COVERED BY THIS WARRANTY.

EXCEPT AS OTHERWISE PROVIDED ABOVE, ARIZONA SHOWER DOOR MAKES NO WARRANTIES, **EXPRESSED OR IMPLIED, INCLUDING WARRANTIES OF MERCHANTABILITY AND FITNESS FOR A PARTICULAR PURPOSE OR COMPLIANCE WITH ANY CODE.**

IN ANY CASE, ARIZONA SHOWER DOOR CANNOT BE HELD LIABLE FOR ANY AMOUNT OVER AND ABOVE THE PURCHASE PRICE PAID FOR THE PRODUCT BY THE OWNER/END-USER, CONTRACTOR, OR BUILDER.

HEAVY GLASS SWING UNITS

IN ADDITION TO THE ABOVE CONDITIONS AND LIMITATIONS, HEAVY GLASS SWING UNITS HAVE A THREE (3) YEAR LIMITED WARRANTY ON THE GLASS AND HARDWARE. IN THE EVENT OF A DEFECT, MALFUNCTION OR OTHER FAILURE OF THE PRODUCT TO WHICH THIS WARRANTY APPLIES, ASD WILL REMEDY THE FAILURE, OR DEFECT, WITHOUT CHARGE TO THE CONSUMER. THE REMEDY WILL CONSIST OF REPLACEMENT OF THE PRODUCT OR REFUND OF THE PURCHASE PRICE AT ASD'S OPTION.

CANYON/SEDONA UNIT

IN ADDITION TO THE ABOVE CONDITIONS AND LIMITATIONS, ARIZONA SHOWER DOOR WARRANTS THE GLASS, HARDWARE COMPONENTS, PLASTIC, POLYCARBONATE, AND VINYL STRIPS OF THE PRODUCT TO BE FREE FROM DEFECTS IN WORKMANSHIP AND MATERIALS UNDER NORMAL USE AND SERVICE FOR A PERIOD OF ONE (1) YEAR FROM THE INITIAL DATE OF PURCHASE BY THE OWNER OR END-USER, CONTRACTOR, OR BUILDER, FROM ASD OR AN AUTHORIZED ASD DEALER.

COMMERCIAL LIMITATIONS

ARIZONA SHOWER DOOR PRODUCTS ARE DESIGNED FOR RESIDENTIAL OR HOTEL SHOWER USE. IF HINGES ARE TO BE USED FOR OTHER THAN THEIR INTENDED PURPOSE, APPROVAL MUST BE OBTAINED FROM ARIZONA SHOWER DOOR. ARIZONA SHOWER DOOR IS NOT RESPONSIBLE FOR LOSS OF USE OR PROFIT UNDER ANY CIRCUMSTANCES. IF THE PRODUCT IS USED AS A DISPLAY, THE WARRANTY PERIOD BEGINS WHEN THE PRODUCT IS PLACED ON DISPLAY.

WARDROBE UNITS

ARIZONA SHOWER DOOR WARDROBES HAVE A LIMITED TWENTY FIVE (25) YEAR WARRANTY AND ARE VALID FROM THE DATE OF PURCHASE. THIS LIMITED WARRANTY APPLIES TO DOMESTIC USE ONLY AND COVERS DEFECTS IN MATERIAL AND WORKMANSHIP. THIS INCLUDES DOOR FRAME, TOP AND BOTTOM TRACKS, TOP GUIDES AND BOTTOM ROLLERS WHERE APPLICABLE. THIS LIMITED WARRANTY DOES NOT APPLY TO PRODUCTS THAT HAVE NORMAL WEAR AND TEAR OR DAMAGES RESULTING FROM MISUSE, ABUSE, NEGLIGENCE, IMPROPER INSTALLATION, ACCIDENTS, EXPOSURE TO CHEMICAL AND/OR ABRASIVE CLEANERS. THIS WARRANTY DOES NOT COVER STEEL COMPONENTS THAT RUST OR CORRODE.

WARRANTY SERVICE

IN ORDER TO OBTAIN SERVICE PROVIDED UNDER THIS WARRANTY DURING REGULAR BUSINESS HOURS, FIRST CONTACT THE DEALER OR DISTRIBUTOR WHO SOLD THE UNIT. ARIZONA SHOWER DOOR WILL PROVIDE THE WARRANTY SERVICE DESCRIBED ABOVE WHEN THE FOLLOWING CONDITIONS HAVE BEEN MET: THE FAILURE IS OF THE NATURE OR TYPE COVERED BY THE WARRANTY; THE USER HAS INFORMED AN AUTHORIZED ASD AGENT OR ASD'S WARRANTY SERVICE DEPARTMENT REPRESENTATIVE OF THE NATURE OF THE PROBLEM DURING THE WARRANTY PERIOD; CONCLUSIVE EVIDENCE (E.G., PROOF OF PURCHASE OR INSTALLATION) IS PROVIDED TO THE FOREGOING BY THE USER PROVING THAT THE FAILURE OCCURRED OR WAS DISCOVERED WITHIN THE WARRANTY PERIOD; AN AUTHORIZED SERVICE PERSON OR COMPANY REPRESENTATIVE HAS BEEN PERMITTED TO INSPECT THE PRODUCT DURING REGULAR BUSINESS HOURS WITHIN A REASONABLE TIME AFTER THE PROBLEM WAS REPORTED BY THE USER. ASD'S WARRANTY OBLIGATION SHALL BE DISCHARGED UPON TENDER OF REPLACEMENT OR REPAIR. THE CUSTOMER'S REFUSAL TO ACCEPT THE TENDER TERMINATES ASD'S WARRANTY OBLIGATIONS.

THIS WARRANTY GIVES YOU SPECIFIC LEGAL RIGHTS, AND YOU MAY HAVE OTHER RIGHTS, WHICH VARY, FROM STATE TO STATE. SHOULD YOU HAVE ANY QUESTIONS CONTACT:

ASD CUSTOMER SERVICE DEPARTMENT
1-800-255-1901
602-447-0000

OR WRITE TO

ARIZONA SHOWER DOOR
2801 WEST INDIAN SCHOOL ROAD
PHOENIX, AZ 85017

ARIZONA SHOWER DOOR

SHOWER ENCLOSURES

Care and Cleaning of Your ASD Bath Enclosure

The simplest and preferred method of cleaning your unit is by washing it with clean water and drying with a soft cloth. If soil is still present after drying a non-abrasive cleaner with a pH of seven to eight may be used. Comet Bathroom Cleaner has been tested and is recommended by the Bath Enclosure Manufacturers Association (BEMA). Do not use scouring pads, sharp instruments, or acid-based cleaners to clean the unit. Always follow the manufacturer's instructions on the labels of household cleaning products. To protect the finish of your bath enclosure you should only use products recommended for glass and anodized aluminum surfaces by the manufacturer of the cleaning product. If in doubt contact the manufacturer of the cleaning product. Use of harsh cleaners or detergents not specifically recommended for use on anodized metal or glass surfaces may damage your unit.

In some geographic locations extremely high mineral content or other foreign compounds in regular tap water causing excessive acidity or alkalinity can damage or discolor glass and anodized aluminum surfaces with repeated exposure. Etching of glass surfaces by chemicals is irreversible and appears as a light gray or whitish stain on the glass that is rough to the touch and can not be removed. This is the same effect seen on the glass tumbler washed repeatedly in a dishwasher using strong dish washing detergent. Spotting is normally the result of mineral buildup on the glass or metal. The anodic coating of aluminum is one of the hardest substances known and is chemically inert to most compounds; however it will be damaged by strong acidic or alkaline solutions. Any chemical that can remove mineral buildup on the surface of aluminum can damage the anodic coating. This will dull or discolor the finish and, on gold units, ultimately cause the color to fade. The most reliable preventative measure to preserve the quality of your bath enclosure unit is to wipe the surfaces daily with a soft cloth after each use.