

# ARIZONA | SHOWER DOOR

## Canyon Series

### Installation Instructions

**IMPORTANT NOTE:** CANYON SERIES SHOWER ENCLOSURES ARE MEANT TO BE INSTALLED WITH THE DOOR TO THE INSIDE OF THE SHOWER OPENING, WITH THE SLIDING GLASS DOOR CLOSING TO THE WALL THE SHOWER HEAD IS LOCATED ON. WHILE CANYON SERIES SHOWER ENCLOSURES MAY BE INSTALLED IN REVERSE, THE SLIDING DOOR MUST BE MOUNTED ON THE OUTSIDE. THIS WILL RESULT IN EXPOSED SCREW HEADS AND MAY REQUIRE ADDITIONAL SEALS AND UNDESIRABLE PERFORMANCE. ADDITIONAL SEALS SOLD SEPARATELY. (See dealer for details)



#### STANDARD CANYON 180° KIT INCLUDES:

- a) 1 - Header Support Bar
- b) 4 - Rollers
- c) 2 - Stoppers
- d) 2 - Wall-To-Bar Fittings
- e) 2 - Glass-To-Bar Fittings
- f) 1 - 8" Back to Back Ladder Style Thru-Glass Pull
- g) 1 - Door Guide
- h) 1 - Length of U-Channel for Fixed Panel
- i) 1 - Sleeve Over Bulb Seal for Door
- j) 1 - Dam Strip
- k) 1- Poly Splash Guard
- l) 1- Bottom Drip Rail Sweep

a) Header Support Bar



b) Roller



c) Stopper



d) Wall-To-Bar fitting



e) Glass-To-Bar fitting



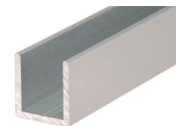
f) 8" Back to Back Square Ladder Pull



g) Door Guide



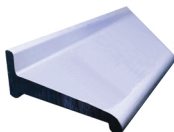
h) U-Channel



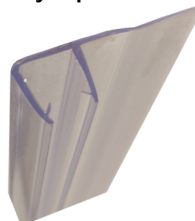
i) Sleeve Over Bulb Seal



j) Dam Strip



k) Poly Splash Guard



l) Bottom Drip Rail Sweep



# ARIZONA SHOWER DOOR

- 1) Install sweep on door panel. Measure width of door panel and add 3/8". Cut sweep to this dimension. Install sweep to bottom of door with soft fin portion facing towards the inside of the shower and 3/8" hanging past handle side of door.
- 2) Install bulb seal to edge of handle side of door panel. The bulb seal is designed to sit on top of sweep previously installed.
- 3) Once sweep and bulb seal are installed set door inside shower on blocks with handle side of panel on the same side as shower head.
- 4) Attach one set of rollers to the top two holes for the sliding door glass. The rollers should be adjusted to the center of their "out of round" position. This allows for adjusting the rollers more easily if needed.
- 5) The header support bar is designed to be positioned in line with the exact center of the curb (minimum curb width of 2-5/8"). To locate the holes in the vertical walls for mounting the header support bar, take the intended overall height to the top of the glass and deduct 4-3/8". This figure will represent the height location from the curb to the bottom of the wall to bar fitting. Note: Due to the extremely smooth nature of rollers, the header support bar must be installed level. **Failure to do so could result in a sliding door that rolls to one side by itself!** Drill the holes and mount the wall to bar fittings to each side wall.
- 6) From the center of the wall to bar fitting, measure 3/4" towards the outside of the curb. This will determine the center-line of your fixed panel support.
- 7) Fasten the fixed panel support to the curb and wall.
- 8) Install fixed panel glass, making sure to plumb and level the glass at the intended height.

**NOTE: Your header bar may or may not have holes drilled into it. If it does not, please continue to Step 9. If it does, please move to Step 9A.**

## 9) Header Bar WITHOUT pre drilled holes

Measure the opening width, (wall to wall,) where your Wall-To-Bar fittings have been mounted. Deduct 3/4". Cut your header bar to that dimension. The header bar is made of stainless steel. Either a handheld hacksaw or special cutting tools should be used. Place the bar into the Wall-To-Bar fittings. Using the holes in your fixed panel as a guide, mark the center of the area where the holes are to be drilled into your header bar. \*Holes must be drilled in center of bar from Top to Bottom. Remove the bar from the Wall-To-Bar fittings. Using a 1/4" drill bit, carefully drill holes through the bar in the appropriate locations. Continue to Step 10.

## 9A) Header Bar WITH pre drilled holes

Holes in the fixed panel glass must align with the pre-tapped holes in the header support bar. Please note: Both ends of the header support bar will have to be cut in order to achieve this. Measure from the center of either hole to the vertical fixed panel wall and deduct 3/8". Cut the header support bar (be sure cut measurement is taken from same hole used in previous step). Once that end of the header support bar is cut, measure the wall-to-wall tight dimension where the track is to be mounted. Deduct 3/4" and cut the

# ARIZONA SHOWER DOOR

opposite side of the header support bar. Please note: The header support bar is made of stainless steel. Either a hand held hacksaw or special cutting tools should be used.

- 10) The header support bar is to be permanently mounted. Prior to mounting the header support bar, slide a stopper on each end, (with the rubber bumper portion toward the ceiling.)
- 11) Lower the header bar into the opening on the top of the Wall-To-Bar fittings. Slide the fastening plate into the top of each Wall-To-Bar fitting, and tighten set screws evenly from top and bottom.
- 12) Before permanently fastening the fixed panel to the header, carefully slide the stopper on the fixed panel side of the header support bar to a midway position between the first hole and the far end of the fixed panel wall.
- 13) With the fixed panel in place, fasten the glass to bar fitting to the fixed panel, attaching the glass to the header support bar.
- 14) Place the guide in the correct position and mark the base/curb for drilling. Guide is designed to slide over u-channel at the end of the fixed panel. Mount the guide.
- 15) Carefully hang the door on the top of the header support bar, placing the glass inside the guide. Slowly roll the door to check for the correct fit and adjust the rollers if needed.
- 16) Fasten the second (lower) set of rollers through the door glass. Adjust the second set of rollers, allowing them to ride 1/16" below the header support bar. The second set of rollers is merely an anti-lift feature and is not intended to roll.
- 17) With the sliding glass door in the closed position, adjust stopper to top roller and tighten set screws.
- 18) Attach back to back ladder style thru-glass pull.
- 19) Slide door to open position, leaving at least 2" between the handle and the fixed panel. Adjust remaining stopper and tighten set screws.
- 20) Measure from the wall to the edge of fixed panel to determine length of the dam strip. Cut and install dam strip directly in line with fixed panel using either a shower approved double stick tape, or silicone.
- 21) Install poly splash guard to fixed panel.
- 21) Clean glass thoroughly.
- 22) Seal glass to wall/channel with silicone and allow the enclosure to cure for 24 hours before use.